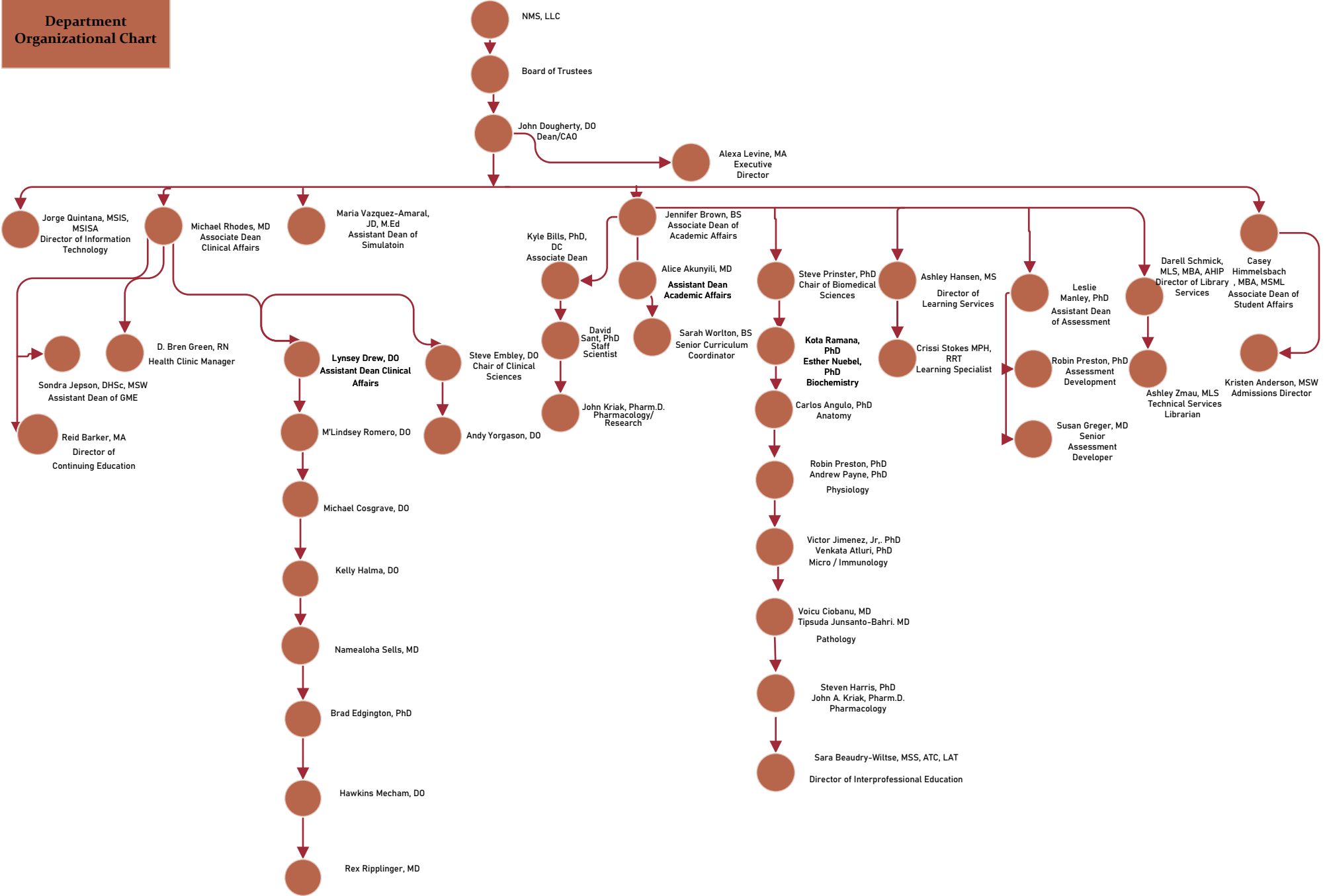


# Department Organizational Chart



Date Approved \_\_\_\_\_  
 Initials \_\_\_\_\_

**President's Office**

**Board of Trustees**

**Norm Wright, PhD  
Interim President**

**Sara Hicken, MBA  
Executive Assistant to the  
Office of the President**

**Alejandro Rojas-Sosa, MBA  
Chief of Financial Officer**

**David Sorensen, M. HRD  
Director of Human  
Resources**

**Douglas Evans, AD  
Director of Facilities**

**Michael Malmgren, MBA  
Financial Controller**

**John Dougherty, DO  
Chief Academic Officer**

**Michael Rhodes, MD  
Associate Dean Clinical Affairs**

**Jennifer Brown, MS HEA  
Associate Dean Academic Affairs**

**Kyle Bills, PhD, DC  
Associate Dean Research**

**Casey Himmelsbach, MBA,  
MSML  
Associate Dean Student Affairs**

**Jorge Quintana, MSIS, MSISA  
Director of Technology  
Operations**

**Maria Vazquez-Amaral, JD,  
M.Ed.  
Assistant Dean for Medical  
Simulation**

**Alexa Levine, MA  
Executive Director**

**Sarah Miles, BS  
Administrative Assistant for  
Dean's Office/HR Office**

**Schyler Richards, BA  
VP of Institutional  
Advancement**

Date Approved \_\_\_\_\_  
Initials \_\_\_\_\_

Dean's Office

John Dougherty, DO  
Chief Academic Officer

Alexa Levine, MA  
Executive Director

Sarah Miles, BS  
Administrative Assistant

Maria Vazquez-Amaral, JD, M.Ed.  
Assistant Dean for Medical  
Simulation

Michael Rhodes, MD  
Associate Dean Clinical Affairs

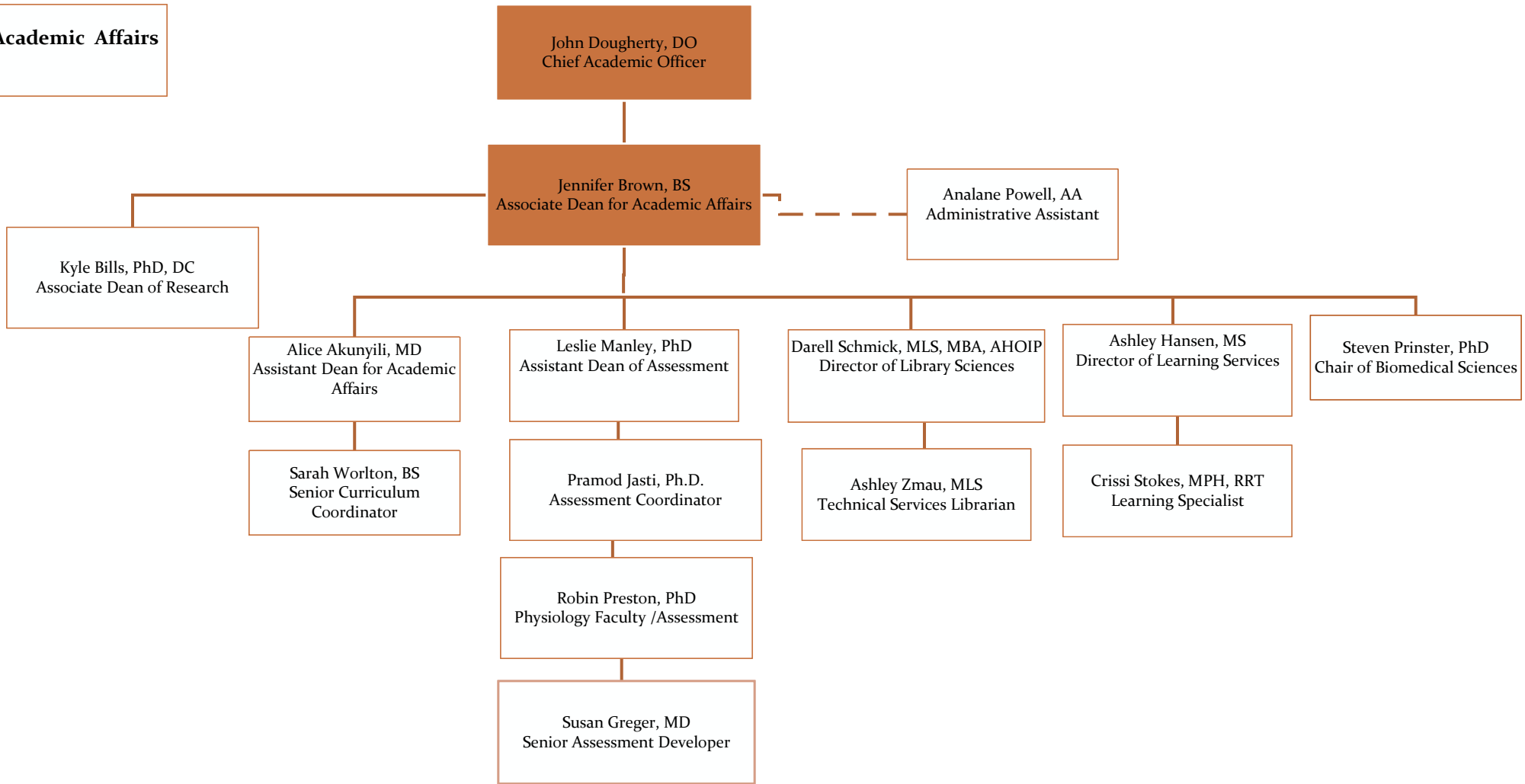
Jennifer Brown, BS  
Associate Dean of Academic  
Affairs

Casey Himmelsbach, MBA, MSML  
Associate Dean of Student Affairs

Jorge Quintana, MSIS, MSISA  
Director of Technology  
Operations

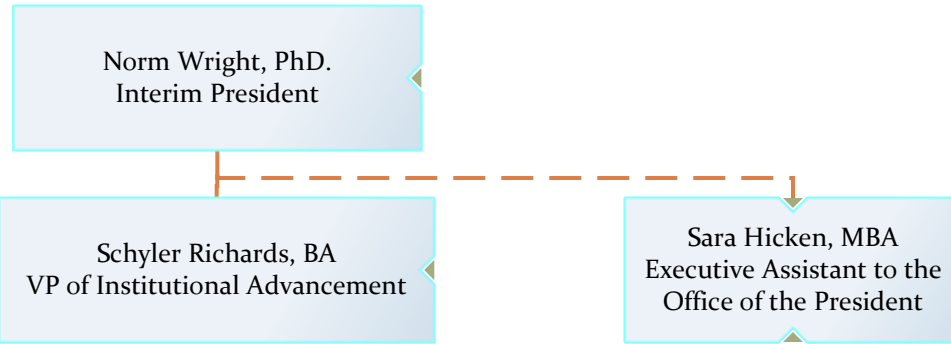
Date Approved \_\_\_\_\_  
Initials \_\_\_\_\_

**Academic Affairs**



Date Approved \_\_\_\_\_  
Initials \_\_\_\_\_

**Advancement**



Date Approved \_\_\_\_\_  
Initials \_\_\_\_\_

**Assessment**

John Dougherty, DO  
Chief Academic Officer

Jennifer Brown, BS  
Associate Dean of Academic  
Affairs

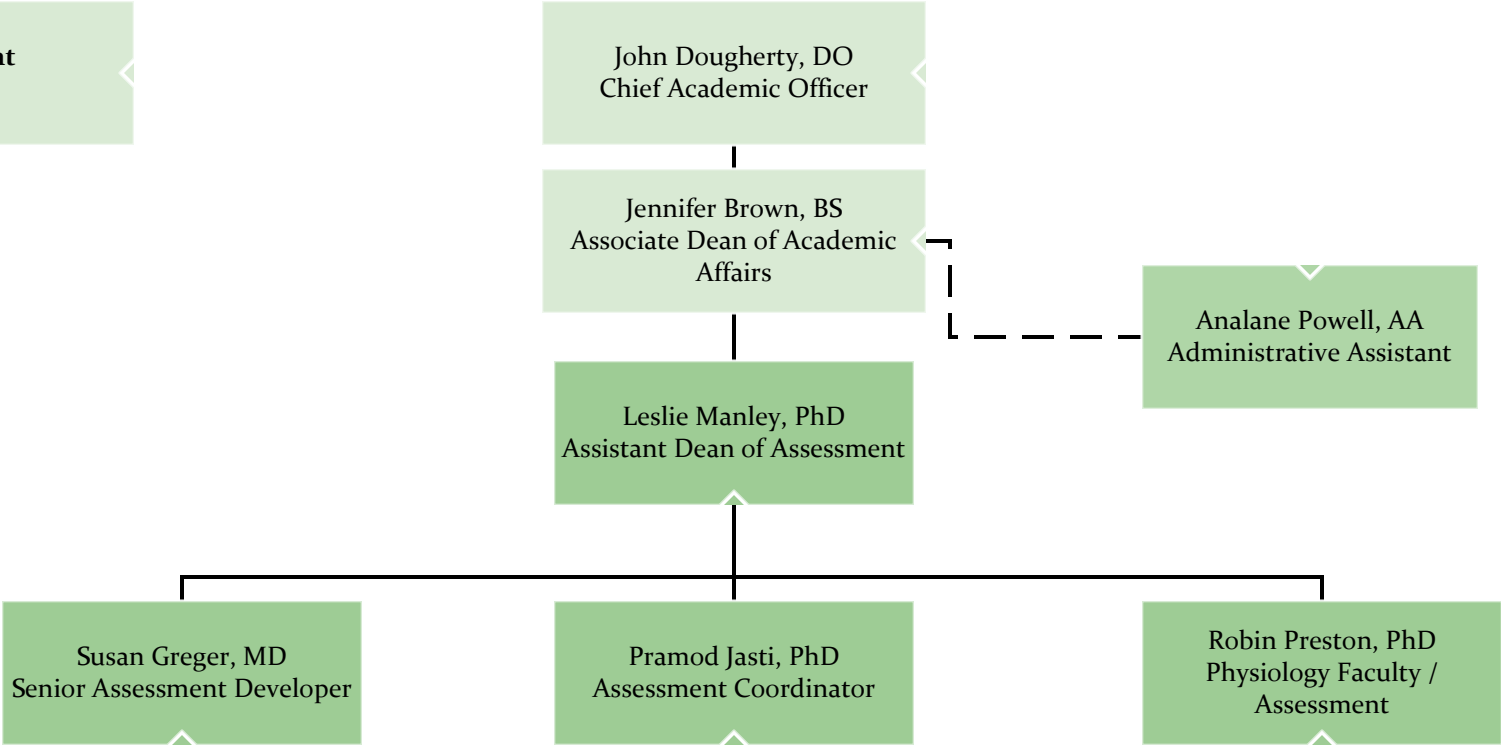
Leslie Manley, PhD  
Assistant Dean of Assessment

Analane Powell, AA  
Administrative Assistant

Susan Greger, MD  
Senior Assessment Developer

Pramod Jasti, PhD  
Assessment Coordinator

Robin Preston, PhD  
Physiology Faculty /  
Assessment

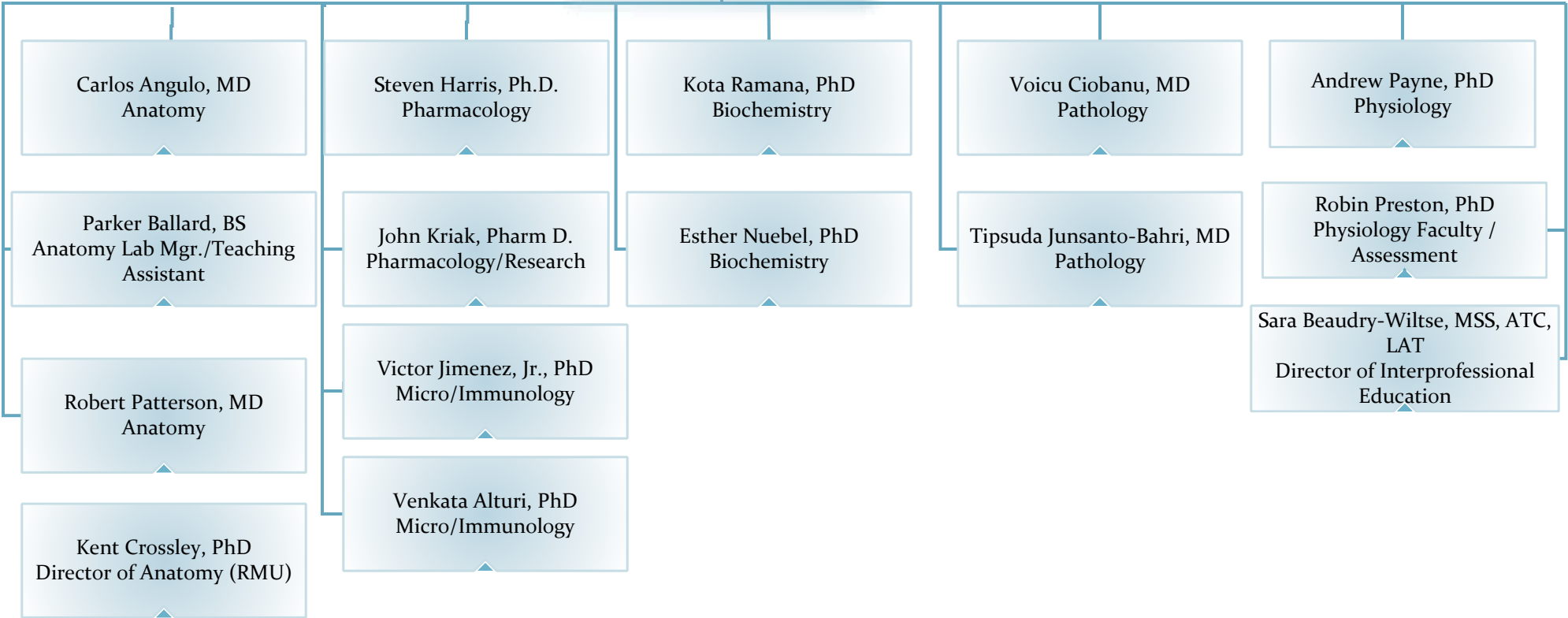


**Biomedical Sciences**

John Dougherty, DO  
Chief Academic Officer

Jennifer Brown, BS  
Associate Dean for Academic  
Affairs

Steve Prinster, PhD  
Chair Biomedical Sciences



Date Approved \_\_\_\_\_  
Initials \_\_\_\_\_

**Clinical Sciences**

John Dougherty, DO  
Chief Academic Officer

Michael Rhodes, MD  
Associate Dean Clinical Sciences

Lynsey Drew, DO  
Assistant Dean Clinical  
Sciences

Megan Collyer, MBA  
Administrative Assistant

Kristy Watters, BS  
Senior Administrative  
Coordinator

Steve Embley, DO  
Chair Clinical Sciences

Tracy Hill, MD  
Title IX Coordinator

Ryder C Olsen, DO  
Director of Military Tract

Michael Cosgrave, DO  
Primary Care

Rex Ripplinger, MD  
Director of Physical Diagnosis

Kenneth Griffin, MD  
Director of Neurology

Ken Richardson, MD, PhD  
Peds/Neonatology

Namealoha Sells, MD  
Primary Care

Bradley Edgington, PhD  
Director Clinical  
Communication

Matthew Pitcher, DO  
Psychiatry

Karl Francis, Jr., MD  
Clinical Faculty, Director of  
Surgery

Date Approved \_\_\_\_\_

Initials \_\_\_\_\_



**Clinical Affairs**

John Dougherty, DO  
Chief Academic Officer

Michael Rhodes, MD  
Associate Dean Clinical Affairs

Lynsey Drew, DO  
Assistant Dean Clinical Affairs

Megan Collyer, MPA  
Administrative Assistant

Kristy Watters, BS  
Senior Administrative  
Coordinator

Megan Collyer, MPA  
Administrative Assistant

Melanie Reece, BS  
Administrative Assistant

Sondra Jepson, DHSc, MSW  
Assistant Dean for GME

Reid Barker, MA  
Director of Continuing Medical  
Education

D. Bren Green, RN  
Health Clinic Manager

Steve Embley, DO  
Chair of Clinical Sciences

Jay Danto, DO  
Chair of OPP

Melanie Reece, BS  
Administrative Assistant

Date Approved \_\_\_\_\_  
Initials \_\_\_\_\_

Clinical Education

John Dougherty, DO  
Chief Academic Officer

Michael Rhodes, MD  
Associate Dean Clinical Affairs

Lynsey Drew, DO  
Assistant Dean Clinical Affairs

**Finance**

Norm Wright, PhD.  
Interim President

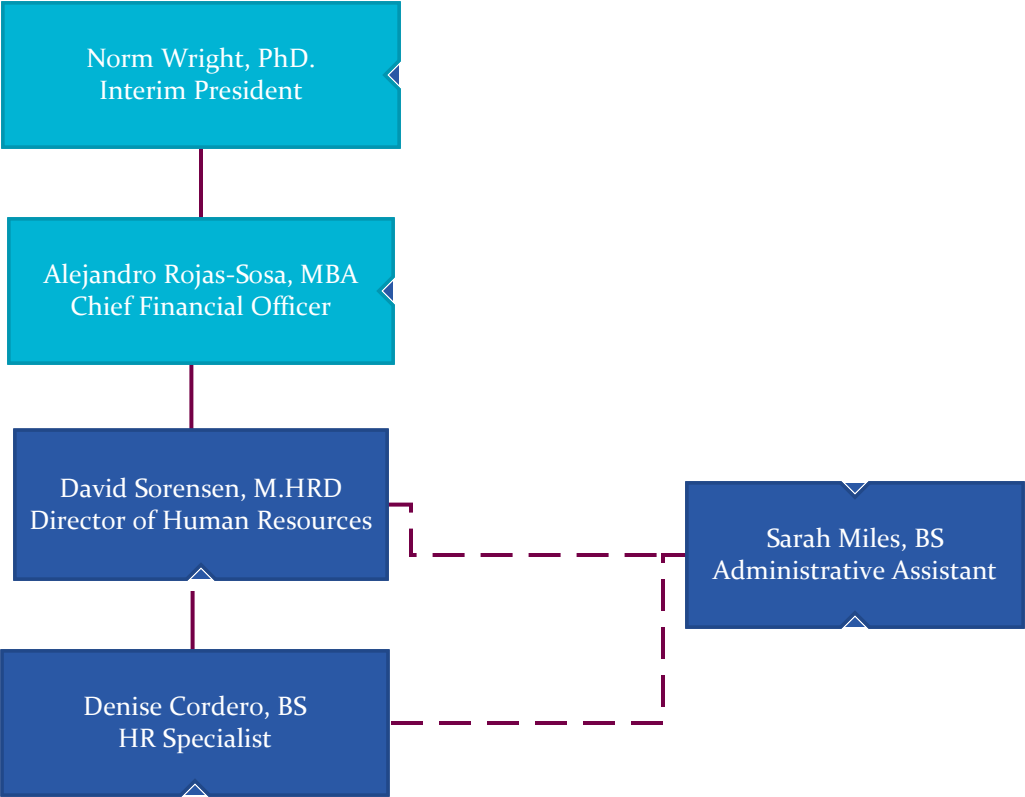
Alejandro Rojas- Sosa, MBA  
Chief Financial Officer

Michael Malmgren, Macc, MBA  
Financial Controller

MindyLee Parks, BA  
Staff Accountant

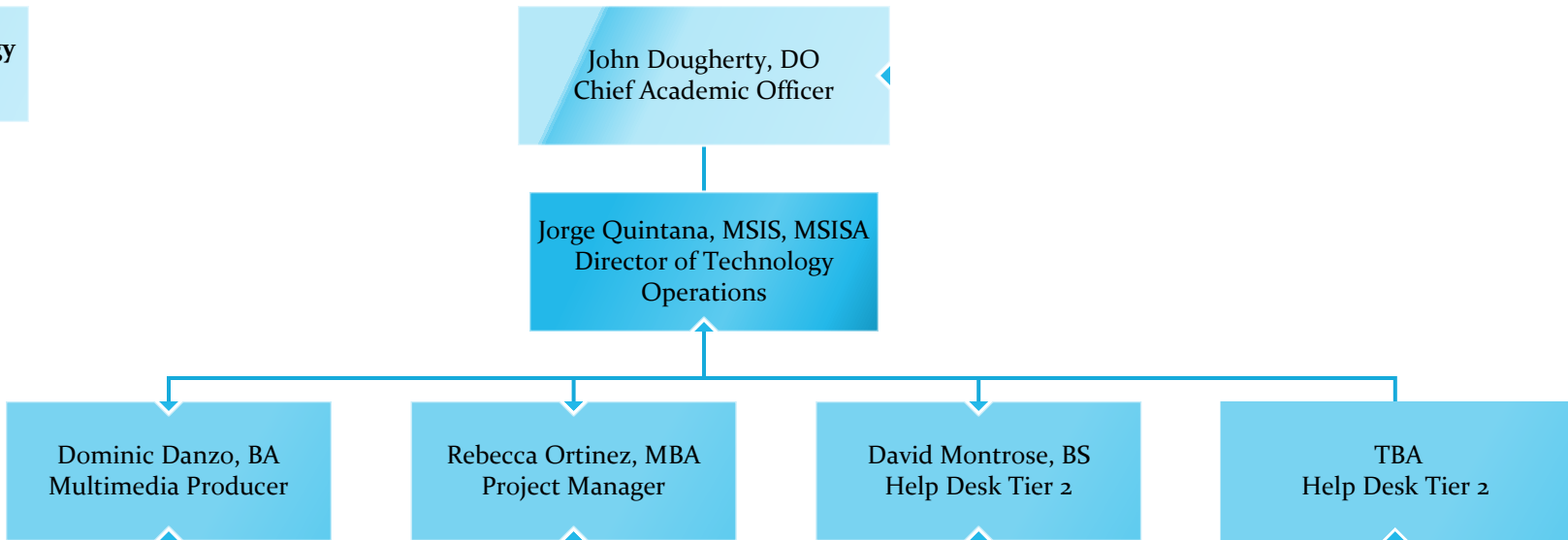
Date Approved \_\_\_\_\_  
Initials \_\_\_\_\_

**Human Resources**



Date Approved \_\_\_\_\_  
Initials \_\_\_\_\_

**Information Technology**



Date Approved _____
Initials _____

**Osteopathic Principles and Practice**

John Dougherty, DO  
Chief Academic Officer

Michael Rhodes, MD  
Associate Dean Clinical Sciences

Lynsey Drew, DO  
Assistant Dean Clinical Sciences

Kristy Watters, BS  
Senior Administrative Coordinator

M'Lindsey Romero, DO  
OPP

Kelly Halma, DO  
OPP

Hawkins Mecham, DO  
OPP

Andy Yorgason, DO  
OPP Table Trainer

Melanie Reece, BS  
Administrative Assistant

Date Approved _____
Initials _____

**Research**

John Dougherty, DO  
Chief Academic Officer

Jennifer Brown, BS  
Associate Dean of Academic  
Affairs

Kyle Bills., PhD, DC  
Associate Dean of Research

David Sant, PhD  
Staff Scientist

John Kriak, Pharm D.  
Pharmacology

Date Approved \_\_\_\_\_

Initials \_\_\_\_\_

**Simulation Department**

John Dougherty, DO  
Chief Academic Officer

Maria Vazquez-Amaral, JD, M.Ed.  
Assistant Dean for Medical  
Simulation

Patrick Murphy, CHSOS  
Director of Operations in  
Medical Simulation

Daniel Hoyt, M.Sc.  
Medical Simulation Specialist

TBA  
Medical Simulation Specialist

Date Approved \_\_\_\_\_  
Initials \_\_\_\_\_



**Student Affairs**

John Dougherty, DO  
Chief Academic Officer

Casey Himmelsbach, MBA, MSML  
Associate Dean of Student Affairs

Cary Beasley, BA  
Administrative Assistant

Kristen Anderson, MSW  
Director of Admissions

Christina Twelves, MPA  
Director of Financial Aid

Freda Strack, MS  
Registrar

Jamie Dougherty, BS  
Director of Student Activities

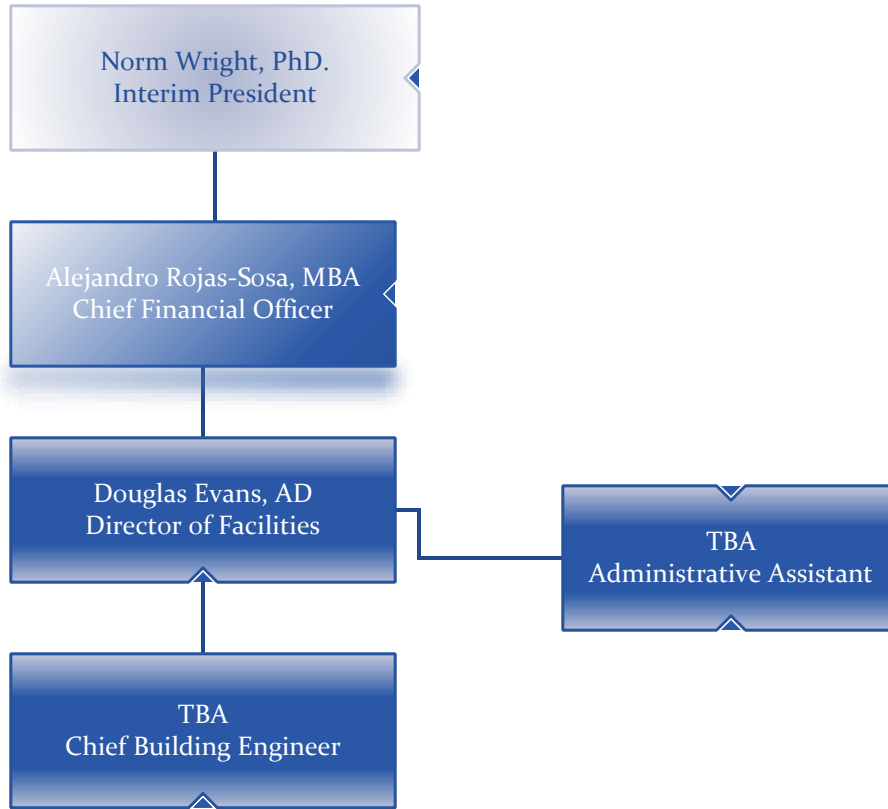
Patrice Carey, MS  
Admissions Counselor

Mark Dimond, MS  
Admissions Counselor

Tanner Allgaier, MBA  
Admissions Counselor

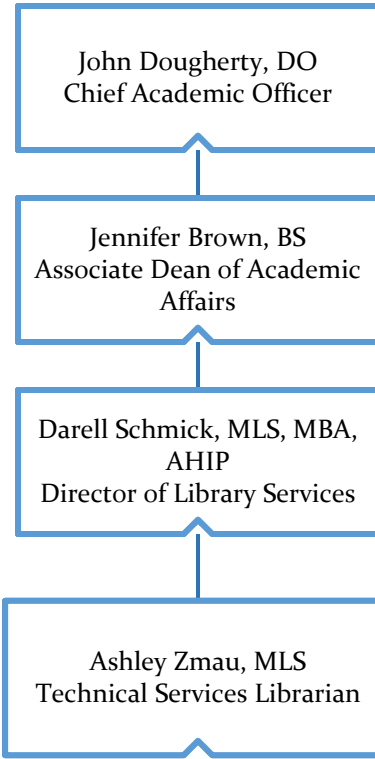
Date Approved \_\_\_\_\_  
Initials \_\_\_\_\_

**Facilities**



Date Approved \_\_\_\_\_  
Initials \_\_\_\_\_

**Library**



Date Approved \_\_\_\_\_  
Initials \_\_\_\_\_