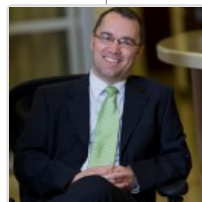
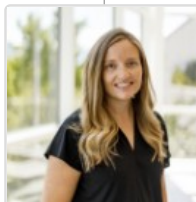




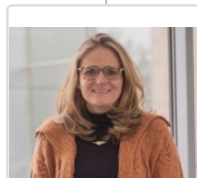
Steven Embley
ASSISTANT DEAN OF
CLINICAL SCI



Andrew Yorgason
FACULTY OF CLINICAL
SCIENCES



Erika Noonan
FACULTY OF CLINICAL
SCIENCES



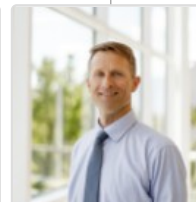
Jamie Treseder
FACULTY OF CLINICAL
SCIENCES



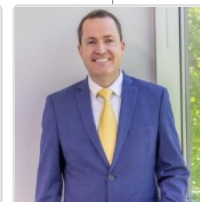
Janee Sells
FACULTY OF CLINICAL
SCIENCES



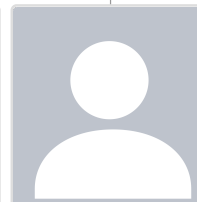
Lisa Saturnino
FACULTY OF CLINICAL
SCIENCES



Michael Cosgrave
FACULTY OF CLINICAL
SCIENCES



Nathan Nakken
CHAIR OF OSTEOPATHIC
PRINCIPLES & PRACTICE



Tracy Hill
FACULTY OF CLINICAL
SCIENCES



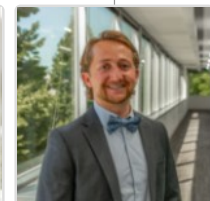
Hawkins Mecham
FACULTY OF OSTEOPATHIC
PRACTICES & PRINCIPLES



Kelly Halma
FACULTY OF OSTEOPATHIC
PRACTICES & PRINCIPLES



M'Lindsey Romero
FACULTY OF OSTEOPATHIC
PRACTICES & PRINCIPLES



Nathan Barnhurst
FACULTY IN OPP